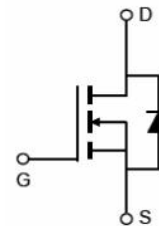


D	80
D ()	7.3 (.)
I _D	90A



-220



A FE

F
150



A

I _D @ c = 25 C	C D C , G @ 10	90	A
I _D @ c = 100 C	C D C , G @ 10	63	
I _D	D C	360	
D @ c = 25 C	D	125	
D	D -	80	
G	G - -	20	
J G	J	-55 +150	C

JC	J - -	.	.	/
----	-------	---	---	---

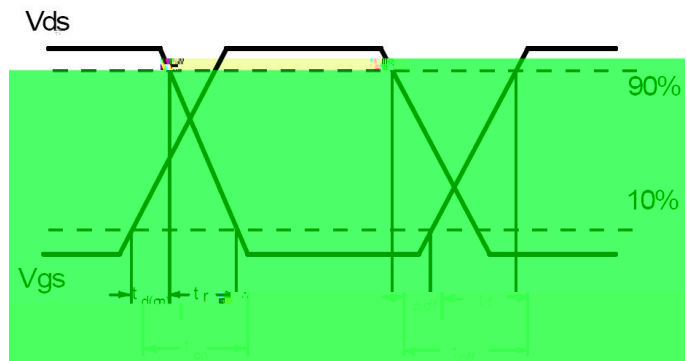
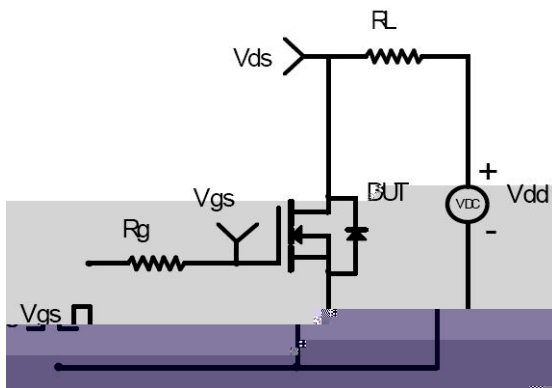
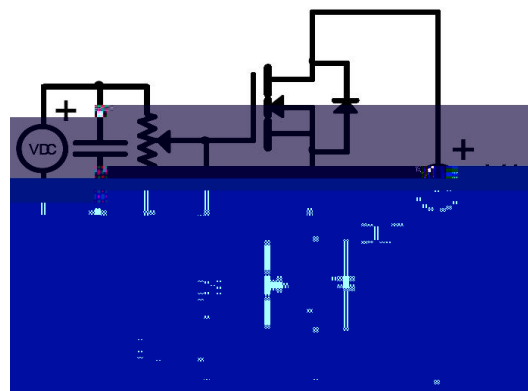
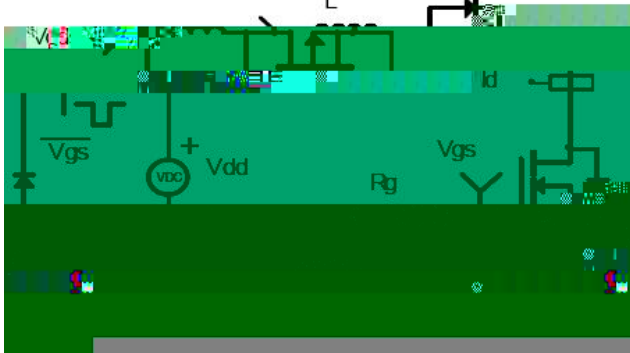
A=25

(B) D	D - -	80			$I_G = 0, I_D = 250 A$
D ()	D - - -		7.3	8.7	$I_G = 10, I_D = 40A$
G ()	G	2		4	$I_D = I_G, I_D = 250 A$
I_D	D - - =25 C			1	A $I_D = 80, I_G = 0,$
I_G	G - -			100	A $I_G = 20, I_D = 0$ $I_G = -20, I_D = 0$
				-100	
			95		C $I_D = 25 C, I_G = 10,$ $I_D = 40, I_D = 40A$
	G - -		18		
	G - -D (" ")		39		
()	-		26		G = 10 D = 40 G = 3 L = 1
			19		
()	-		59		
	F		25		F $I_G = 0$ $I_D = 25$ $I = 1 H$
C	I		4163		
C			249		
C			181		

-

I	C C (B D)			90	A	FE
I	C (B D)			360	A	
I_D	D F			1.2		$I = 40A, I_G = 0$
			8			$I_J = 25 C, I_F = 20A, / =$
	C		35		C	500A/

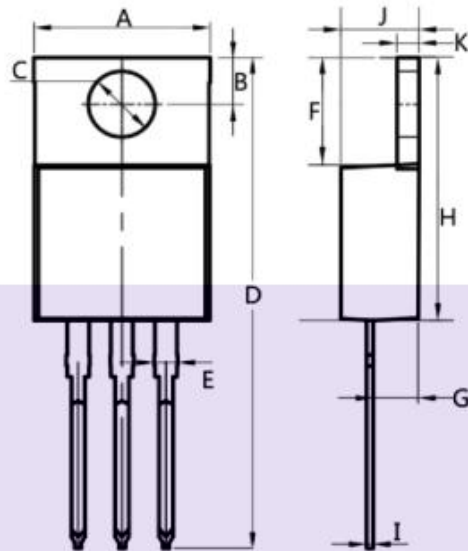
A



C

D

TO-220AB



Dim.	Min.	Max.
A	10.0	10.4
B	2.5	3.0
C	3.5	4.0
D	28.0	30.0
E	1.1	1.5
F	6.2	6.6
G	2.9	3.3
H	15.0	16.0
I	0.35	0.45
J	4.3	4.7
K	1.2	1.4
All Dimensions in millimeter		

A :

A

U.ç • H

C